

INDUSTRIAL ROOFING – WARM – EXPOSED – STEEL

SPECIFIC SYSTEM FOR WATERPROOFING INDUSTRIAL AND CIVIL ROOFS WITH A STEEL SUBSTRATE

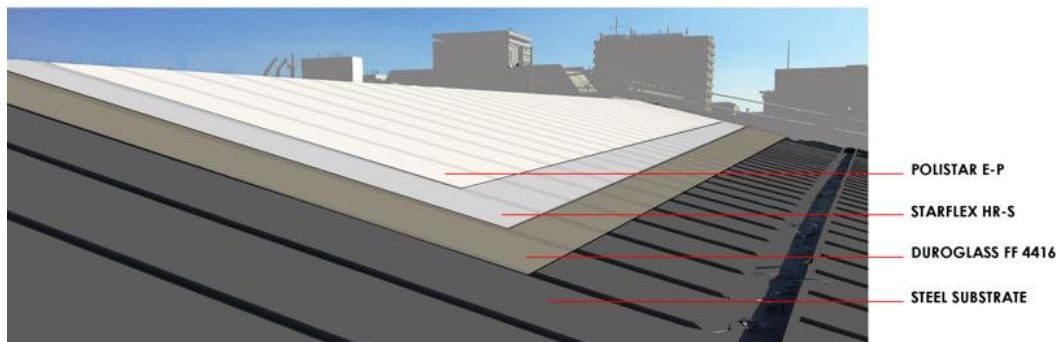
SUBSTRATE PREPARATION

- Substrate to be treated must be free from debris and dust. Clean the substrate by either water jetting or air blowing and/or brushing.

PRIMING:

SYSTEM

- **DUROGLASS FF 4416** is 2 component solvent based modified epoxy primer for concrete, steel, wood, plastic and tiles old coatings, and the product can be applied in multi-purpose applications on a wide range of substrates. It has long over application time (15 days).
Can be applied by brush or airless spray as presented or diluted with 5-10% of Diluente 21, with consumption of 0,200 Kg/m². For airless application, use 0.015"-0.021" nozzles at a pressure of at least 180 bars.



WATERPROOFING MEMBRANE:

- **STARFLEX HR-S**, 2 components liquid soft polyurea waterproofing, fast hardening with a very fast attainment of the final mechanical characteristics, high elasticity and tenacity. Another waterproofing membrane is **STARFLEX HR**, rapid curing pure polyurea two-component 100% solids elastomeric with a theoretical consumption of 2,2-4,4 Kg/m².
- **STARFLEX HR-S** can be applied exclusively by spraying devices (proportional hot spray) with two-component airless pumping units, equipped with a mixing gun. The theoretical consumption is 2,5-4,0 Kg/m².

TOP COAT:

- The over coating has to be applied within 3-4 hours maximum after the application of **STARFLEX HR-S** or **STARFLEX HR**.
- **POLISTAR E/P**, two component elastic polyurethane based UV- resistant, anti-skid and wear resistant protective coating, one component elastic aliphatic polyurea based top coat for manual application at a rate of 0,15-0,25 kg/m² per coat.

The product for anti-slip can be added /charged with 0,1-0,3 mm quartz and or be broadcasted with 0,1- 0,5 quartz on the first of the 2 top coats.
When 2 coats must be applied do not let more than 48 hours between the coats.

Performance indicators	S C G H E
Elastic	▲▲▲▲
Wear resistance	▲▲▲▲▲
Thickness	▲▲▲▲
Durability	▲▲▲▲▲

S = Satisfactory // C = Comparable // G = Good // H = High // E = Excellent

- **POLISTAR E/2**, 2k polyurethane based uv- resistant, anti-skid and wear resistant protective coating, with a consumption of 0,150 Kg/m².

Performance indicators	S C G H E
Elastic	▲▲▲
Wear resistance	▲▲▲
Thickness	▲▲▲
Durability	▲▲▲▲

S = Satisfactory // C = Comparable // G = Good // H = High // E = Excellent

- Fast Hardening with a very fast attainment of the final mechanical characteristics.

- Applicable also in vertical and ceiling.
- High elasticity, tenacity, resistance to puncturing, abrasion resistance and wear resistance with the ability of crack-bridging.
- Operating temperatures from -40°C to +90° C in the air.

Industrial Roofing Cold Exposed Steel				
Thickness 2 mm				
layer		Consumption Kg/mq	thickness DFT mm	Coverage Cost g/micron
Primer	1	DUROGLASS FF416	0,200	0,094
Waterproofing	2	STARFLEX MONO TIX	0,500	0,853
		STARFLEX MONO	0,200	0,627
Reinforcement	3	STARTEX NW/GM		0,500
Waterproofing	4	STARFLEX MONO TIX	0,000	0,568
		STARFLEX MONO	0,900	0,470
Top Coat	5	POLISTAR E/P	0,150	0,069
Top Coat	5	STARFLEX MONO TOP	0,300	0,149
2				

Over-application (h)
1
24
24
24
24
Can be walked on 3 days

Features
Good anti-corrosion properties.
Good flexibility and crush strength
High elasticity and tensile strength.
No yellowing or colour changing
Operating temperature
-30 90

Continuous waterproofing membranes, concrete surfaces protection
Ideal for: Roofs, terraces and balconies, Bridge decks, overpasses and podiums, Wet areas, Renewing old membranes.
One component Moisture curing liquid polyurethane

