

# STARFLEX

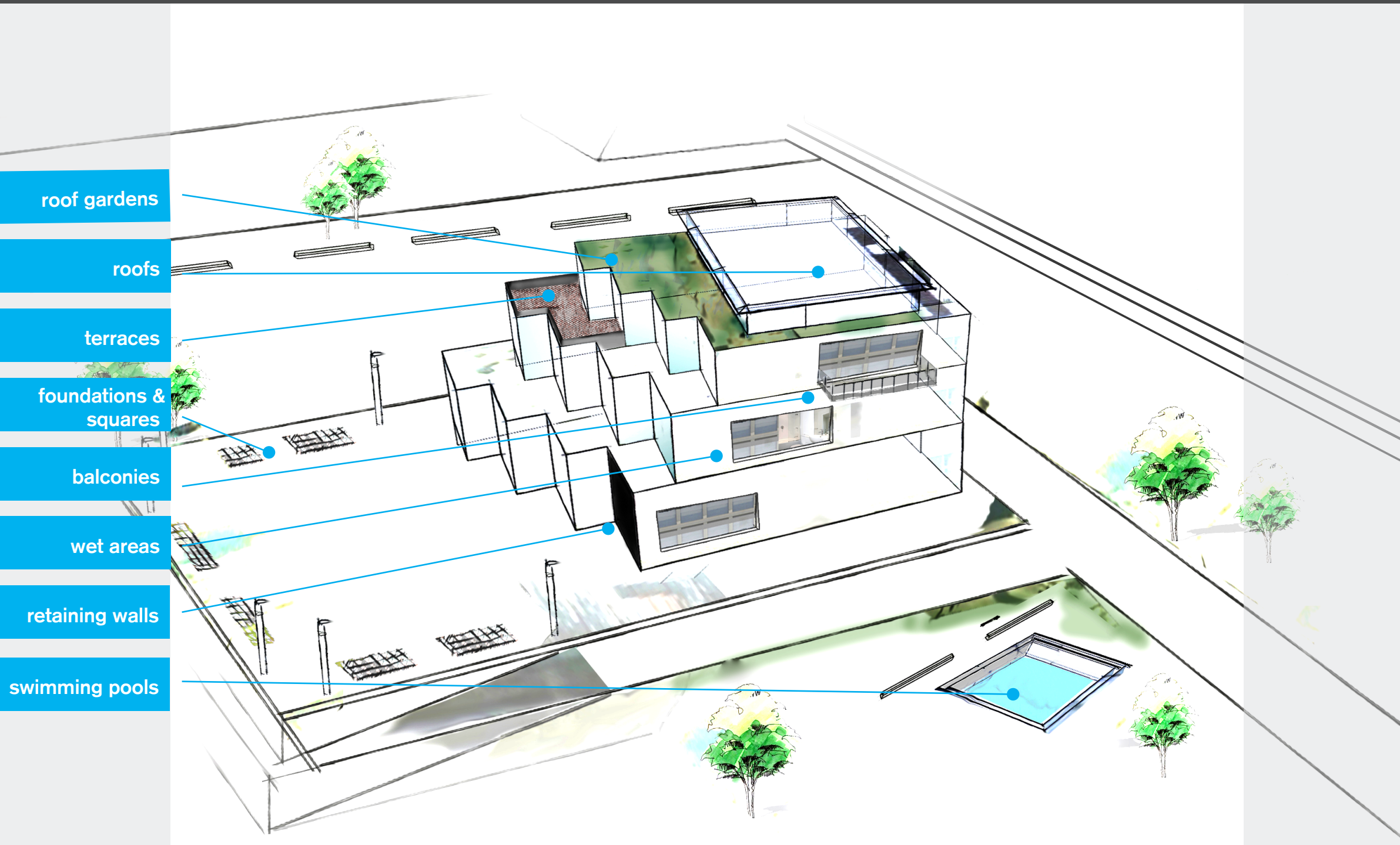
**PURE** LIQUID WATERPROOFING  
technology



# POLYURETHANES



**STARFLEX Mono System** are liquid applied polyurethane waterproofing systems, ideal solutions for seamless waterproofing.



## MAIN PRODUCTS

STARFLEX MONO

STARFLEX MONO TIX FR

STARFLEX MONO BT

STARFLEX MONO TOP

## BENEFITS

1 COMPONENT

FAST

EASY TO USE





1 COMPONENT MOISTURE CURING LIQUID POLYURETHANE MEMBRANE

BENEFITS

- ✓ Simple application (1 component, ready to use)
- ✓ Crack bridging properties

APPLICATION FIELDS

- Roofs, terraces and balconies
- Bridge decks, overpasses, podiums
- Roof gardens
- Wet areas
- Renewing old membranes



CERTIFICATIONS

- Fire resistant certification Broof (t4)



\* BBA and ETAG 005 pending

1 COMPONENT THIXOTROPIC MOISTURE CURING LIQUID ELASTIC POLYURETHANE MEMBRANE

BENEFITS

- ✓ High thickness in one coat
- ✓ Thixotropic
- ✓ 1 day system
- ✓ Wet on wet application

APPLICATION FIELDS

- Roofs, terraces and balconies
- Flashings
- Bridge decks, overpasses, podiums
- Roof gardens
- Wet areas
- Renewing old membranes

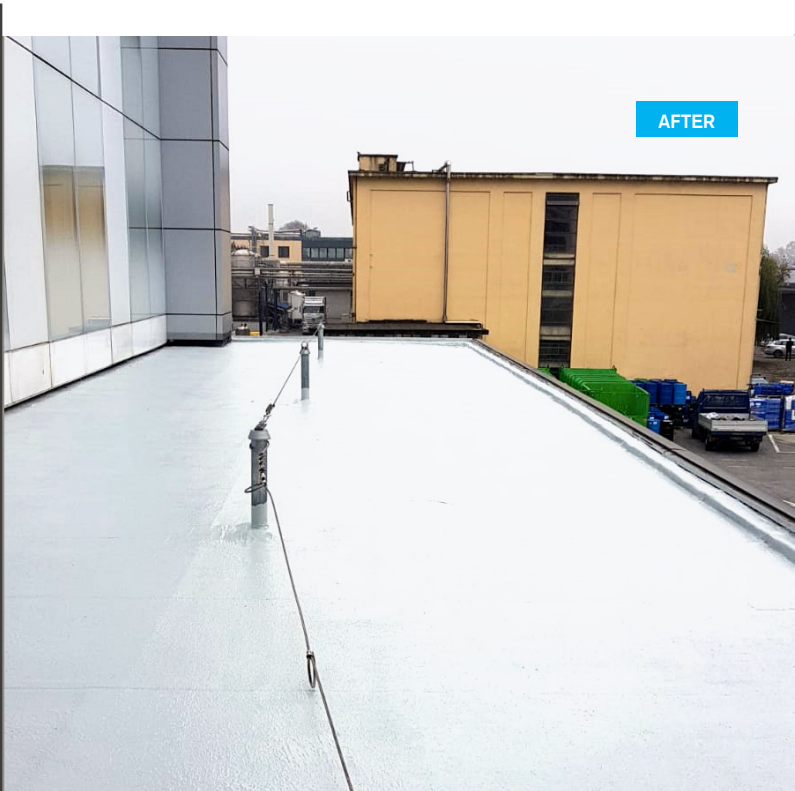
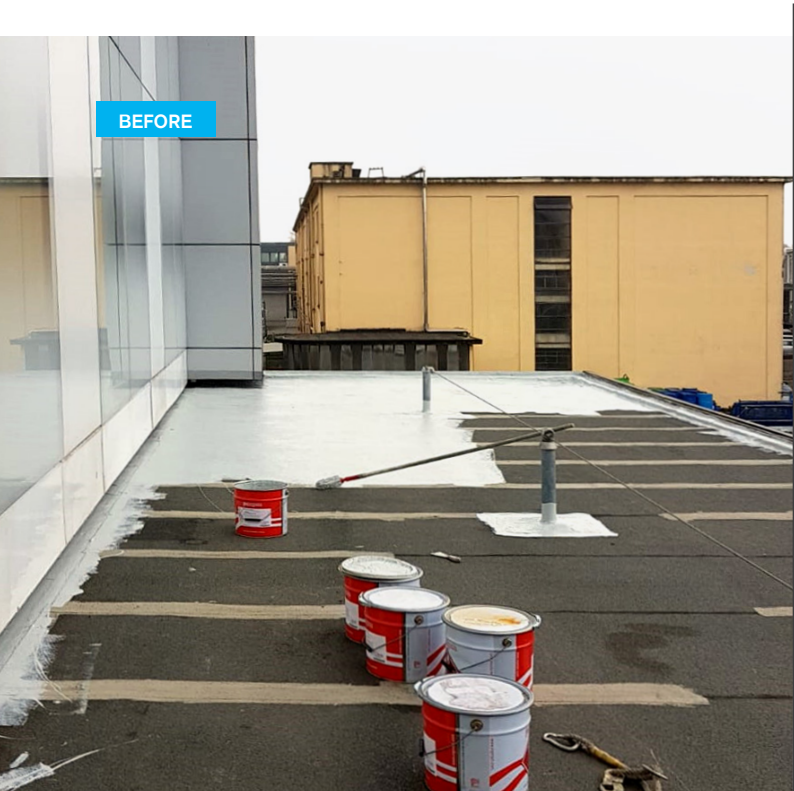


CERTIFICATIONS

- Fire resistant certification Broof (t4)



\* BBA and ETAG 005 pending





# STARFLEX MONO BT



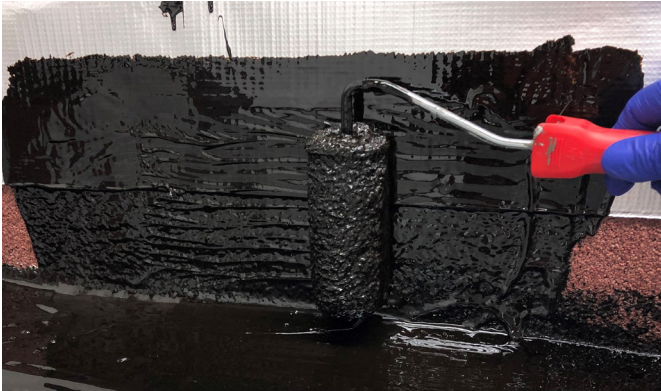
1 COMPONENT BITUMEN EXTENDED POLYURETHANE MEMBRANE

### BENEFITS

- ✓ Simple application
- ✓ Elastic
- ✓ Chemical resistant

### APPLICATION FIELDS

- Retaining walls
- Foundations
- Wet areas under tiles
- Flashing details



### CERTIFICATIONS



\* BBA and ETAG 005 pending



# STARFLEX T



1 COMPONENT MOISTURE CURING BASED ON ELASTIC POLYURETHANE MEMBRANE  
ISOCYANATES ALIPHATIC AND SPECIAL POLYOLS

### BENEFITS

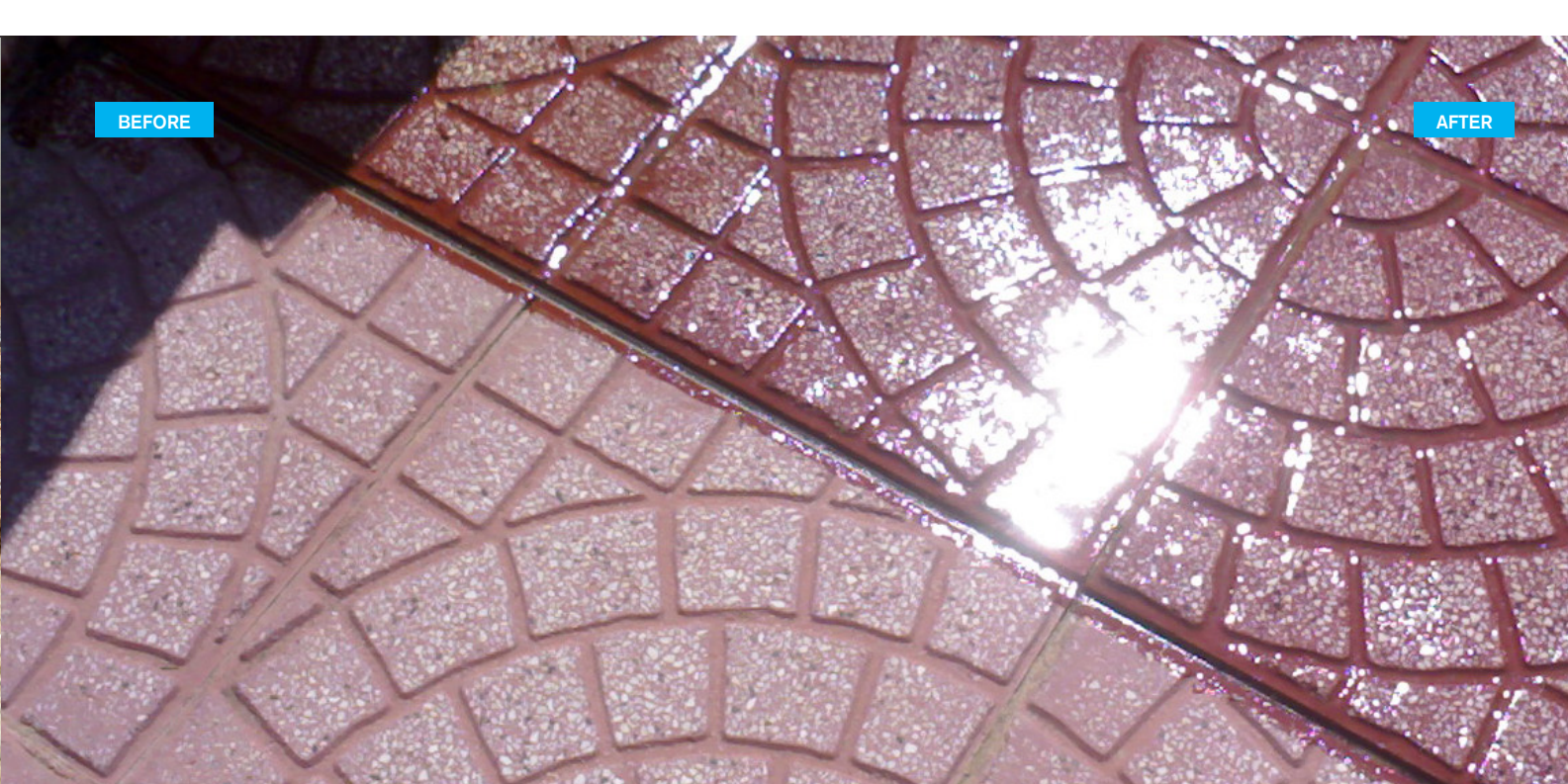
- ✓ UV resistant
- ✓ Non yellowing, non chalking
- ✓ Transparent

### APPLICATION FIELDS

- Balconies and terraces
- All surfaces in ceramic, natural stones, wood and tiles
- Glass and glass brick-walls
- Transparent plastic (polycarbonate)



### CERTIFICATIONS





# STARFLEX MONO TOP



1 COMPONENT ELASTIC ALIPHATIC TO BE COLOURED POLYUREA TOP COAT

### BENEFITS

- ✓ UV resistant
- ✓ Color stable
- ✓ Simple application

### APPLICATION FIELDS

- Roofs
- Terraces
- Balconies
- Walkways
- Car Parks



### CERTIFICATIONS



\* BBA and ETAG 005 pending

# STARFLEX C

WATER BASED 2 COMPONENT



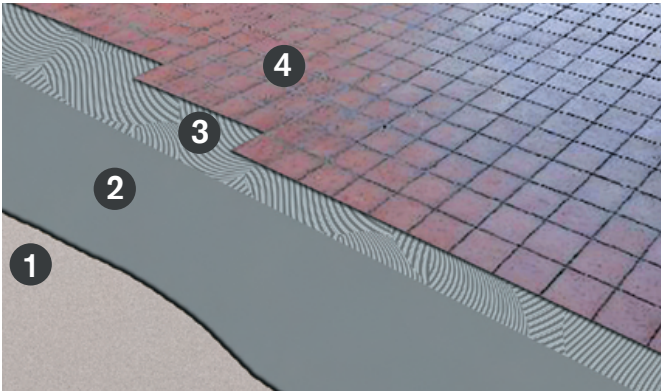
ELASTIC LIQUID MEMBRANE WITH HYDRAULIC BINDERS AND SYNTHETIC ELASTOMERIC RESINS

### BENEFITS

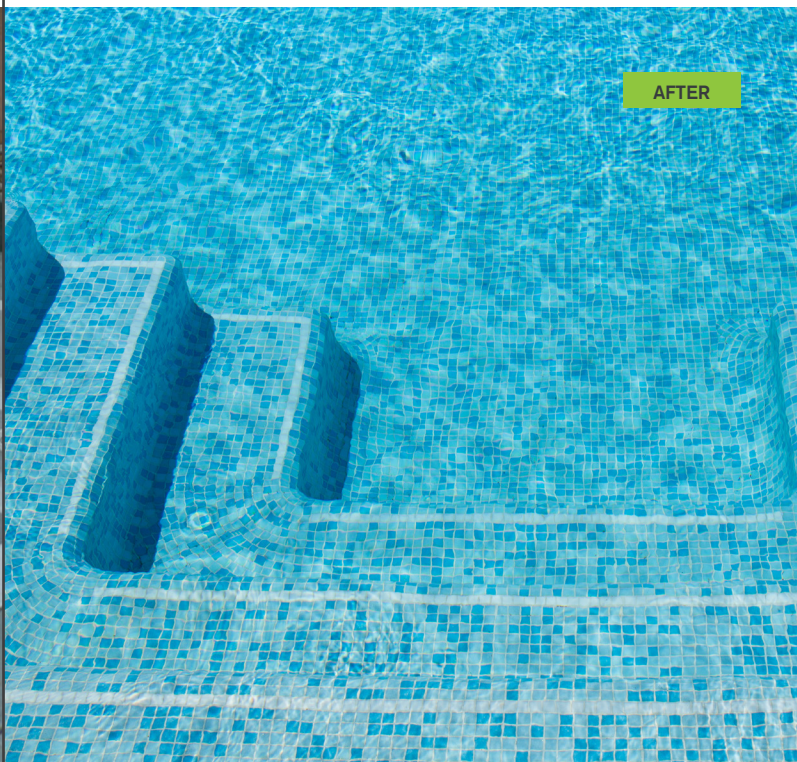
- ✓ Water based simple application
- ✓ Crack bridging properties

### APPLICATION FIELDS

- Roofs, terraces and balconies
- Wet areas under tiles
- Swimming pools
- Water tanks



### CERTIFICATIONS

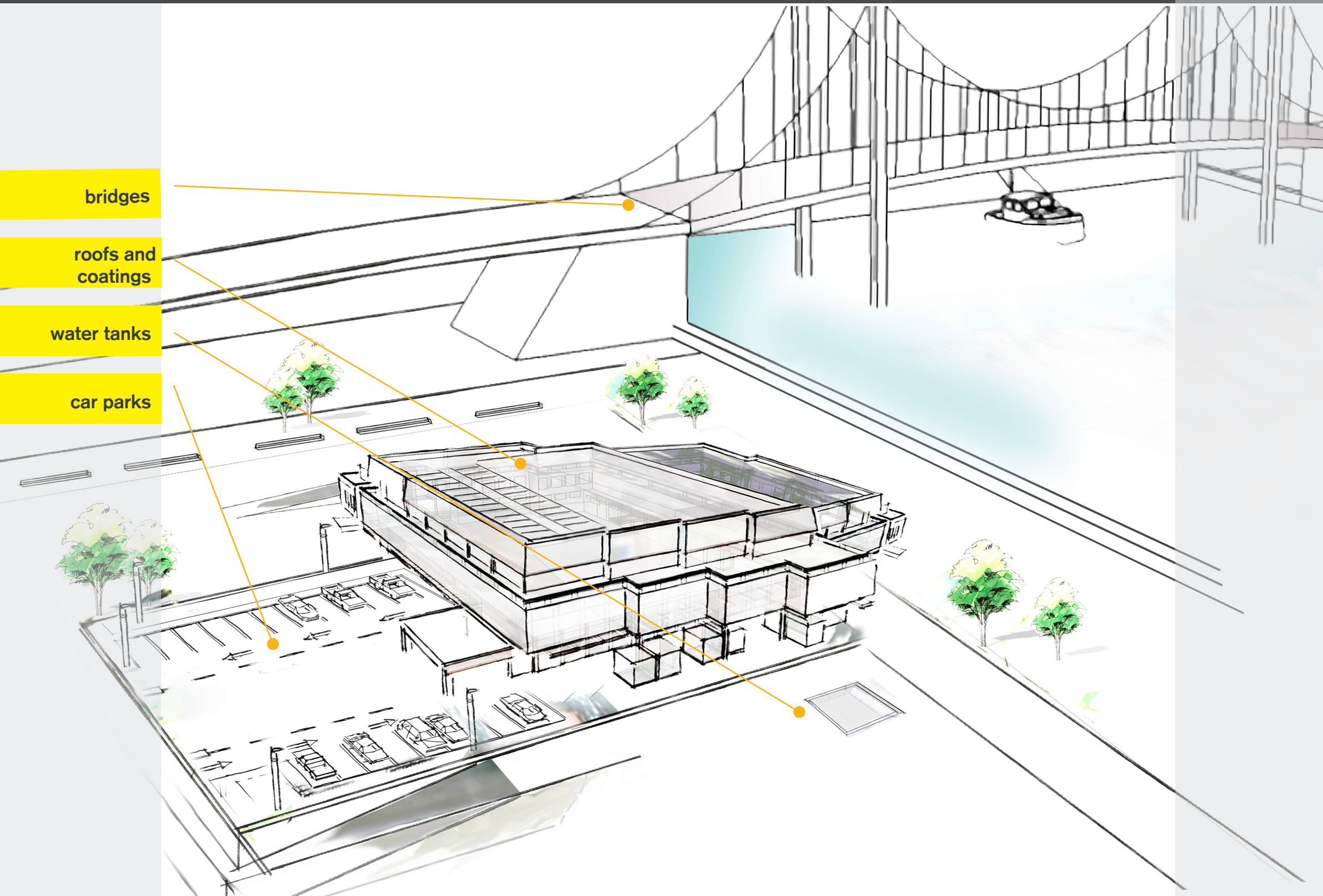




# POLYUREA



**STARFLEX HR System** are advanced polyurea based waterproofing systems, 2 components hot spray applied solutions, ideal for rapid waterproofing applications.



bridges

roofs and  
coatings

water tanks

car parks



## MAIN PRODUCTS

**STARFLEX HR-M**  
manual polyurea

**STARFLEX HR**  
pure polyurea

**STARFLEX HR-S**  
soft extended polyurea

**STARFLEX HR-E**  
hybrid polyurea

## BENEFITS

**2 COMPONENTS**

**ULTRA RAPID**

**ULTRA RESISTANT**





2 COMPONENTS MANUAL POLYUREA

BENEFITS

- ✓ High build membranes
- ✓ High mechanical resistance
- ✓ Manual application
- ✓ Fast curing

APPLICATION FIELDS

- Car parks
- Walkways
- Balconies and terraces



CERTIFICATIONS



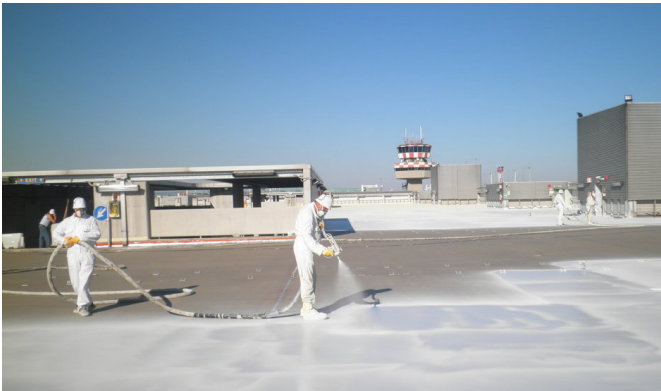
RAPID CURING 2 COMPONENTS POLYUREA

BENEFITS

- ✓ High mechanical properties
- ✓ Fast curing
- ✓ Wide range application

APPLICATION FIELDS

- Car parks
- Roof waterproofing for civil and industrial buildings
- Industrial, agricultural and petrochemical plants
- Protection and waterproofing of hydraulic plants, pipes and dams
- Bridges, viaducts and underground structures



CERTIFICATIONS





SUBSTRATES



BITUMINOUS MEMBRANE



TILES, CERAMICS, MARBLE..



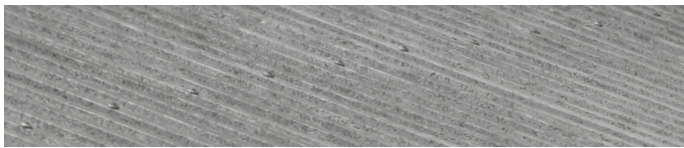
MINERAL / CEMENT



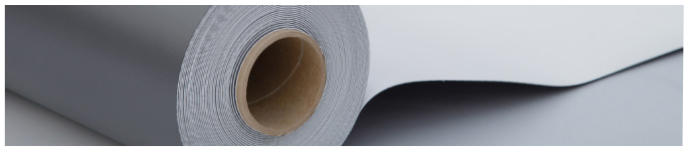
HUMID SURFACES (DPM)



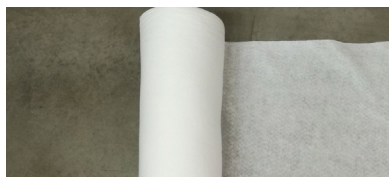
WOOD



ALUMINIUM / STEEL



PVC/ TPO/ EPDM



**STARTEX NW**  
**Non - woven polyester fabric 60g/sqm**  
Reinforced Mash for all our overlay existing liquid systems.



**STARTEX FC**  
Polypropylene fiber woven fabric in uv-continuous fiber



**STARTEX GM**  
**Glass Fibre Reinforcement Matting 220g/sqm**  
Glass reinforced matting for all our overlay existing liquid systems.



**STARMASTIC P95**  
Mean elastic module one-component polyurethane sealant for flooring joints or special seals.  
This sealant bonds directly to concrete, marble, stone, steel, aluminium, glass, resin, wood and plastic. It can be overpainted with elastomers and has excellent elasticity and resistance to chemical agents and water.



**PLASTOSTAR GLUEX**  
Highly deformable powder adhesive suitable for tiles also fro immersion in water. Complies to EN 12004 and EN 12002 as gluex C2TE s1.



PRIMERS

**PRIMER 0230**  
**PRIMER 0230R**  
**STARCEMENT 5/A** or none

**DUROGLASS FF 4416**  
**DUROGLASS P1/2**

**DUROGLASS FF 4416**  
**PRIMER 0260**  
**STARCEMENT 5/A**

**DUROGLASS FU BIANCO TX**  
**DUROGLASS FU RAPID**

**PRIMER 0230** or none

**DUROGLASS FF 4416**

**PRIMER 0130**

RESPONSIBILITY AND RESPECT FOR THE ENVIRONMENT

*"I think having land and not ruining it is the most beautiful art that anybody could ever want to own"*  
**Andy Warhol**

Internal environmental quality



Certifications  
ENVIRONMENTAL



Certifications  
PRODUCT SAFETY



Certifications  
FIRE RESISTANT CERTIFICATION



Certifications  
MANAGEMENT SYSTEM

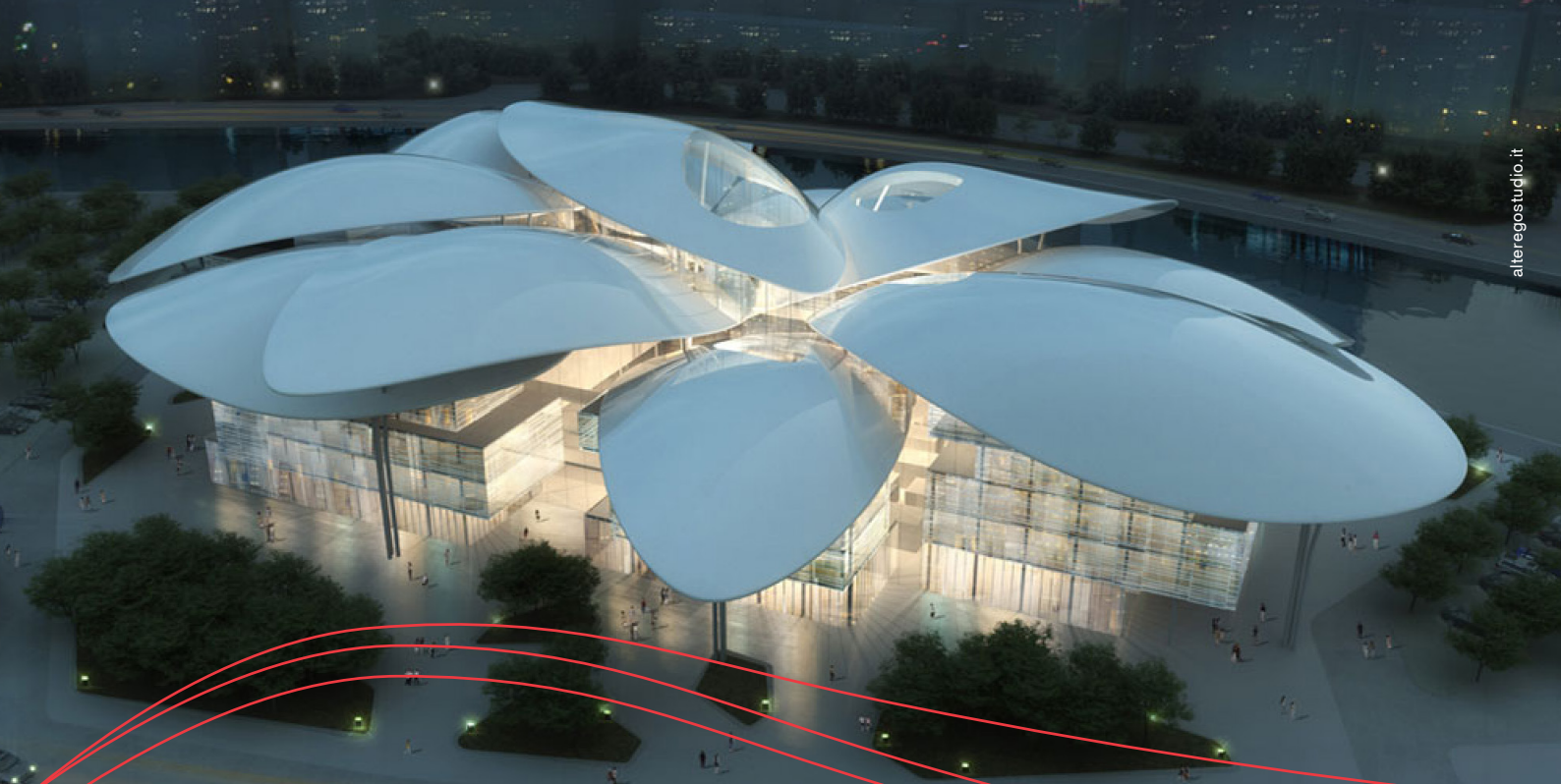


Certifications  
DURABILITY



\* BBA and ETAG 005 pending





think GLOBAL act LOCAL



## Headquarter

**mpm s.r.l.**

via Adda, 15

20090 Opera (Milano) - Italy

tel. +39 02 57609116

[info@mpmsrl.com](mailto:info@mpmsrl.com)

[www.mpmwaterproofing.com](http://www.mpmwaterproofing.com)